


**INSTALLATION MANUAL**

**GRANIUM T5 HIGHBAY FITTING**

- GRANIUM 424W
- GRANIUM 624W
- GRANIUM 454W
- GRANIUM 654W

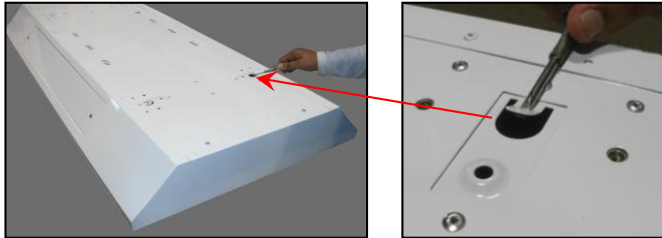
**INSTALLATION NOTICE**

**Warning**

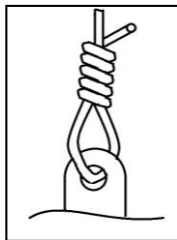
- Please follow all the installation manual carefully. Any improper installation will cause burn, electrical shock and lamp malfunction.
- Please do not modify or change the actual part of the lamp
- Please ensure the incoming supply voltage in valid rating.
- If the lamp malfunction, please cut off the supply and call the qualified technician or the related store which sell this product.
- Please do not close this product with sound or heat prove material. 
- Please do not install this product near to the inflammable material.

**Notice**

- Please do not install this product under direct sun reflected area, enclose with vaporized material & vibrating area.
- Please cut off the supply during the maintenance work.

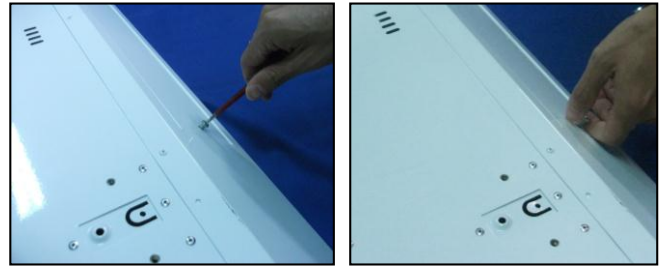


**Step 1:** Bend all four hanging hook to hang the lamp frame.



**Step 2:** Insert suitable wire and twist it for minimum five times as shown in the picture.

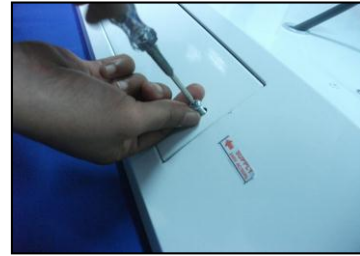
**!** Please make sure that all the parts are tightened to prevent the ceiling from supporting excess weight. The thickness of the wire must be minimum 2.0mm.



**Step 3:** Open the control gear slot by undone its 2 screws which can be found on the edge of lamp frame.



**Step 4:** Insert the electric supply cable into the lamp frame and connect it to the provided connector.



**Step 5:** Close the control gear cover and tighten it using the screws that were undone during the third step.